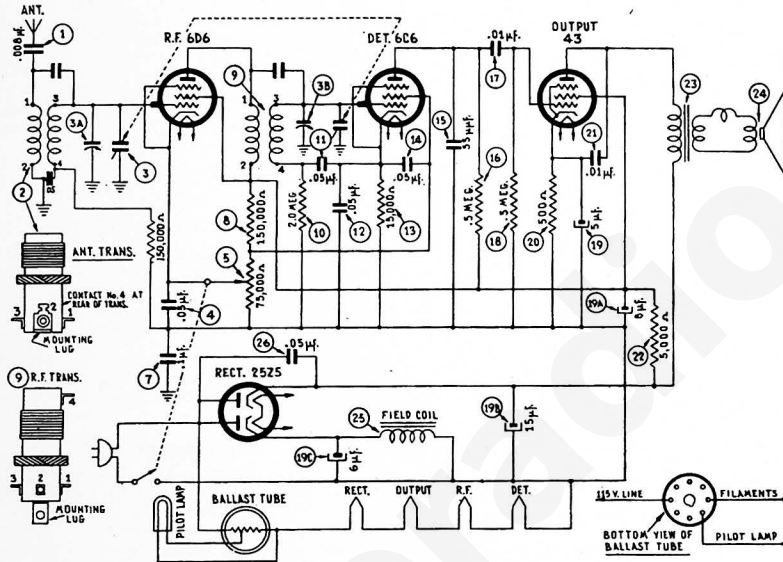


# PHILCO MODEL TH-1

MODEL TH-1 is a 5 tube receiver designed for operation on alternating current (A.C.) or direct current (D.C.) 115 volts and covers a frequency range of 540 to 1720 kilocycles.

An indoor aerial 20 feet in length is attached to the receiver for average receiving conditions. In remote localities where signal strength is weak, a regular outdoor aerial is recommended, such as Philco aerial Part No. 40-6383. For hotels and apartment house installations, Philco Utility Aerial Part No. 40-6384 should be used.



## ALIGNMENT OF THE COMPENSATORS TRANSITONE HOME RADIO MODEL TH-1

In order to align the R.F. circuit of the receiver, an output meter, and signal generator will be required. With these instruments, the compensators should be adjusted as given below.

1. Connect an output meter to the plate and cathode terminals of the 43 tube.
2. The signal generator output lead is now connected to the aerial wire of the receiver through a 100 mfd. condenser and the generator ground to a good ground connection. Then, turn the volume control to a full volume position.
3. Adjust the dial pointer as follows: Turn the tuning condenser to maximum capacity position. With the condenser in this position, the dial pointer should be  $\frac{1}{4}$  inch below the 550 K.C. mark of the dial and horizontal with the chassis.
4. Set the signal generator and receiver dial for 1500 K.C. and adjust padders 3A and 3B for maximum reading on the output meter.

## REPLACEMENT PARTS

### TRANSITONE HOME RADIO MODEL TH-1

Schem. No.	Description	Philco Part No.	Schem. No.	Description	Philco Part No.
1	Condenser (.006 mfd. 200 V).....	32104	23	Output Transformer.....	43118
2	Ant. Transformer.....	40168	24	Speaker.....	60110
3	Tuning Condenser.....	33110	25	Field Coil.....Part of Spkr. Unit	
4	Condenser .05 mfd. 200 V).....	32100	26	Condenser .05 mfd. 400 V.....	32101
5	Volume Control.....	49115		Clip (Drive Cord).....	20156
6	Resistor 150,000 ohms.....	47100		Dial (Scale).....	16200T
7	Condenser .1 mfd. 200V.....	32117		Dial Window.....	14100
8	Resistor 150,000 ohms.....	47100		Drive Cord Assembly.....	90232
9	R.F. Transformer.....	40189		Drive Pulley & Screw.....	21102
10	Resistor 150,000 ohms.....	47100		Knob Assembly.....	13100
11	Condenser .05 mfd. 200 V.....	32100		Pointer.....	20237
12	Condenser .05 mfd. 200 V.....	32100		Socket 25Z5.....	15103
13	Resistor 15,000 ohms.....	47154		Socket 6D6.....	15100
14	Condenser .05 mfd. 200 V.....	32100		Socket 6C6.....	15101
15	Condenser 55 mfd.....	30115		Socket 43.....	15102
16	Resistor .5 megohm.....	47101		Socket K55B.....	15104
17	Condenser .01 mfd. 200 V.....	32102		Socket Assembly (Pilot Lamp).....	90100
18	Resistor .5 megohm.....	47101		Shaft (Tuning Drive).....	21101
19	Electrolytic Condenser.....	31116		Spring (Drive Cord).....	23103
20	Resistor 500 ohms.....	47155		Speaker Cone.....	
21	Condenser .01 mfd. 400 V.....	32103		Washer "C" Type Drive Shaft.....	23102
22	Resistor 5000 ohms.....	47105			